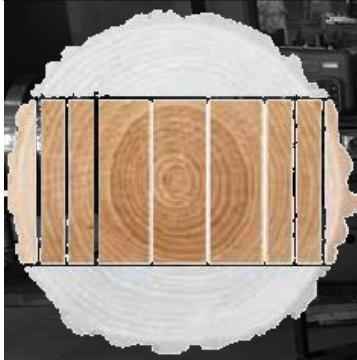




Multirip Light



Machine Specifications

Board Width (mm) – 40 - 400

Board Height (mm) – 50 - 160

Blade Ø – 270 mm

Speed – 2800 rpm

Saw Motor – 1 x 30 kW 2 Pole

1 x 22 kW 2 Pole

Feed Drive – 2.2 kw gear motor
with a VSD, up to 50 m/min

Dimensions (mm) L – 1200

W – 1100

H – 1500

Power Rating (Kw) – 55

The Multirip Light is capable of sawing a cant into multiple boards while maintaining accuracy and precision of the boards produced. Along with high accuracy comes an excellent finish to the product produced. The sturdy build and high quality finish of the components allow for a continuous operation while maintaining accuracy. Key features include:

- Pneumatic hold downs
- Heavy duty steel frame
- Optional in and out feed systems
- Quick and easy maintenance



[Click here for the
product VIDEO](#)

Contact:

[Allan Pierce](mailto:apierce@pinnacle-sa.com)

apierce@pinnacle-sa.com

066 391 4647